

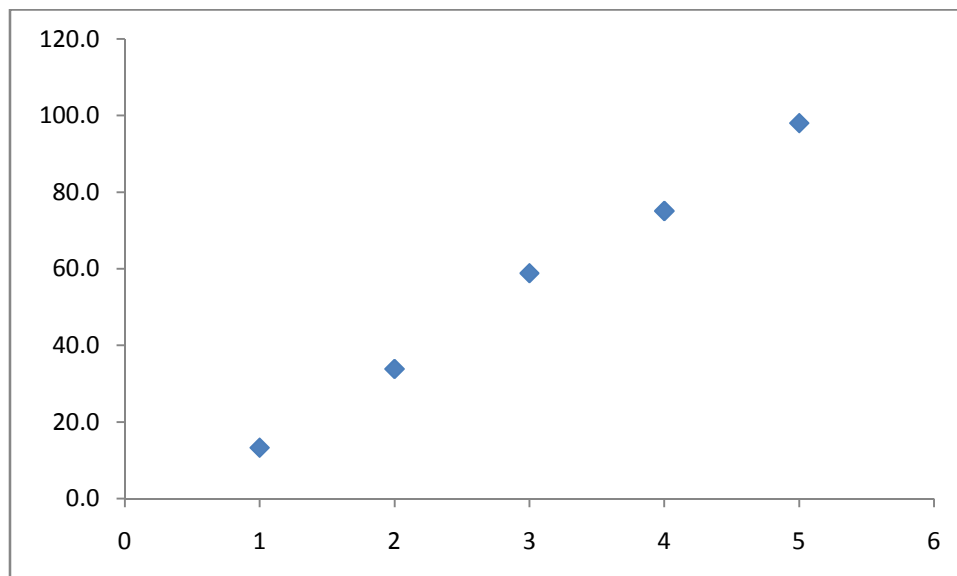
In Excel 2007 the method to insert the mean \pm SD is as follows

Let's assume for the exercise we have 5 samples

1. Calculate the arithmetic mean for each sample
2. Calculate the standard deviation (STDEV)

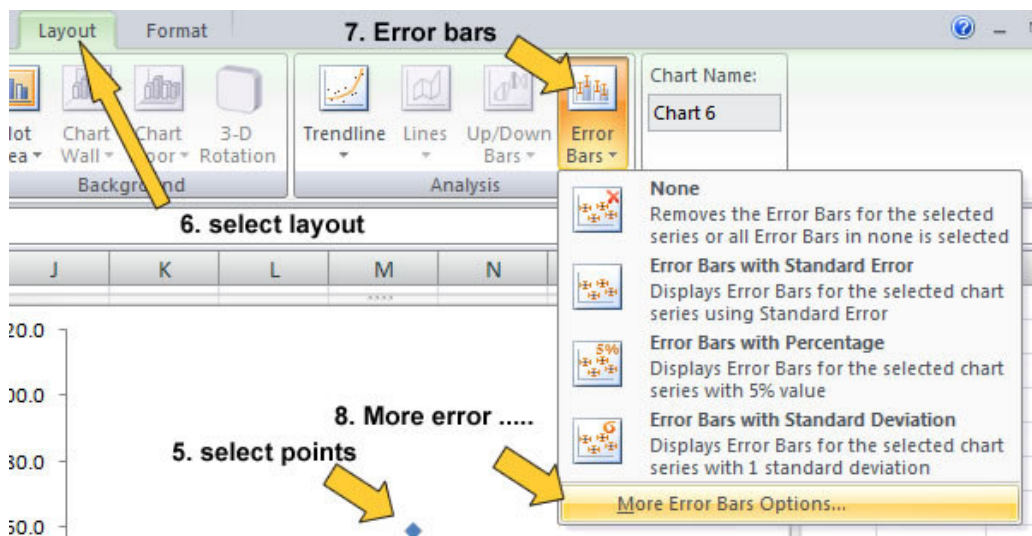
	Sample A	Sample B	Sample C	Sample D	Sample E
	12	24	44	56	99
	12	23	45	67	98
	13	24	56	76	87
	14	25	65	74	78
	15	28	66	101	89
	15	34	66	98	110
	10	37	61	88	104
	11	38	59	57	114
	12	45	57	44	102
	16	34	54	67	89
	14	44	61	84	100
	16	41	66	87	101
	13	43	65	77	103
Mean	13.3	33.8	58.8	75.1	98.0
SD	1.9	8.2	7.6	16.8	9.9

3. Select the cells that contain the means for the 5 samples
4. INSERT a SCATTERGRAPH

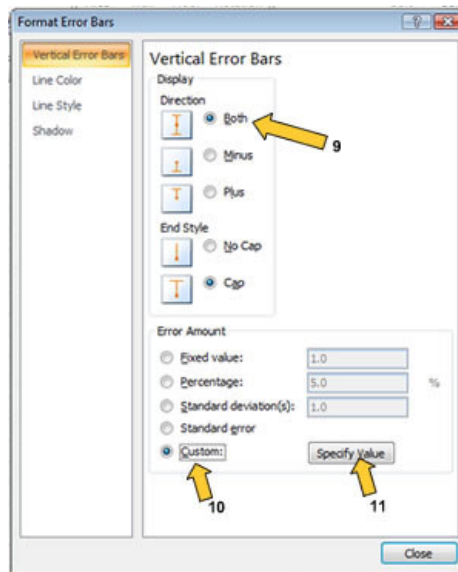


In this example I have neglected to format the x-axis but this can be easily customized to show your choice of labels

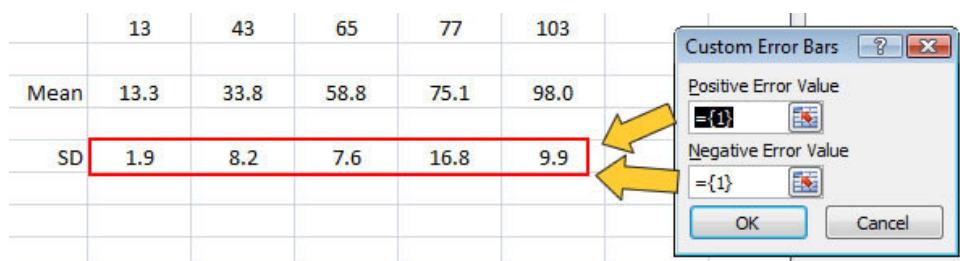
5. Select the plotted points on the graph
6. Select LAYOUT
7. Select Error bars



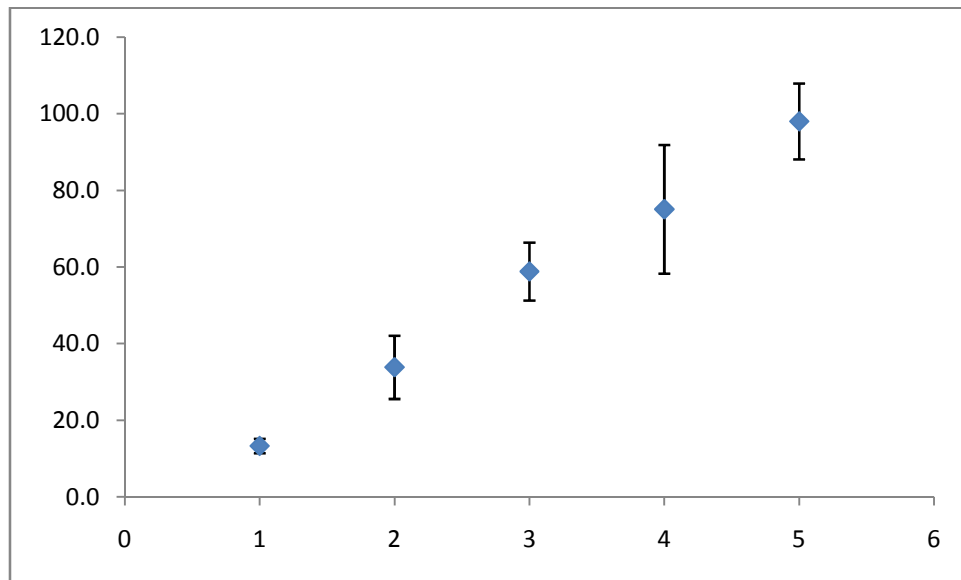
8. More Error Bars options
9. Select BOTH
10. Select Custom
11. Select Specify Value



12. In the Positive and Negative error bar values select the calculated standard deviations



12. Close the dialogue box and the graph should now look something like this:



13. The graph will need to be formatted